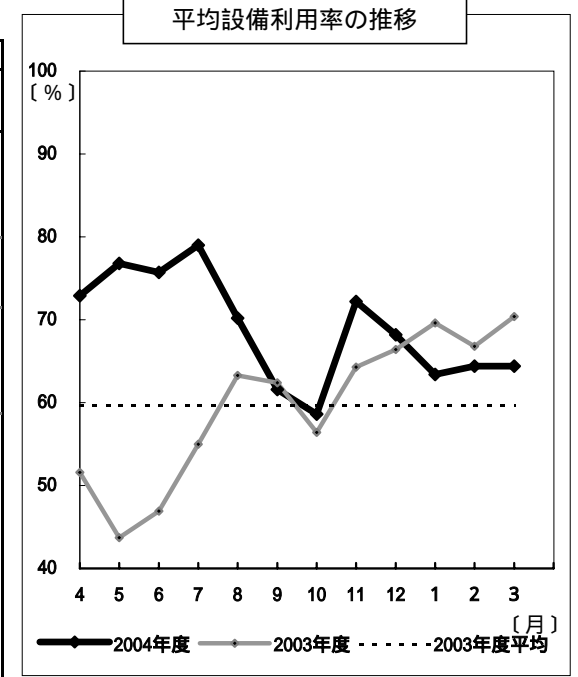


わが国の原子力発電所の運転実績

(原産調べ)

| 発電所名     | 炉型    | 認可出力<br>〔万kW〕 | 2005年3月     |            |                |            | 2004年度      |            |                |            |
|----------|-------|---------------|-------------|------------|----------------|------------|-------------|------------|----------------|------------|
|          |       |               | 稼働時間<br>〔時〕 | 稼働率<br>〔%〕 | 発電電力量<br>〔MW時〕 | 利用率<br>〔%〕 | 稼働時間<br>〔時〕 | 稼働率<br>〔%〕 | 発電電力量<br>〔MW時〕 | 利用率<br>〔%〕 |
| 東海第二     | BWR   | 110.0         | 744         | 100.0      | 829,637        | 101.4      | 8,163       | 93.2       | 9,075,064      | 94.2       |
| 敦賀1      | "     | 35.7          | 744         | 100.0      | 267,827        | 100.8      | 7,471       | 85.3       | 2,670,811      | 85.4       |
| "2       | PWR   | 116.0         | 744         | 100.0      | 877,600        | 101.7      | 7,013       | 80.1       | 8,219,364      | 80.9       |
| 泊1       | "     | 57.9          | 744         | 100.0      | 439,534        | 102.0      | 6,773       | 77.3       | 3,981,298      | 78.5       |
| "2       | "     | 57.9          | 744         | 100.0      | 444,428        | 103.2      | 7,067       | 80.7       | 4,177,794      | 82.4       |
| 女川1      | BWR   | 52.4          | 0           | 0.0        | 0              | 0.0        | 4,732       | 54.0       | 2,490,055      | 54.2       |
| "2       | "     | 82.5          | 0           | 0.0        | 0              | 0.0        | 7,105       | 81.1       | 5,924,184      | 82.0       |
| "3       | "     | 82.5          | 744         | 100.0      | 635,188        | 103.5      | 6,550       | 74.8       | 5,539,041      | 76.6       |
| 福島第一1    | "     | 46.0          | 0           | 0.0        | 0              | 0.0        | 0           | 0.0        | 0              | 0.0        |
| "2       | "     | 78.4          | 744         | 100.0      | 580,635        | 99.5       | 5,866       | 67.0       | 4,434,733      | 64.6       |
| "3       | "     | 78.4          | 387         | 52.0       | 125,168        | 21.5       | 3,435       | 39.2       | 2,522,767      | 36.7       |
| "4       | "     | 78.4          | 0           | 0.0        | 0              | 0.0        | 6,055       | 69.1       | 4,740,832      | 69.0       |
| "5       | "     | 78.4          | 0           | 0.0        | 0              | 0.0        | 5,122       | 58.5       | 3,991,518      | 58.1       |
| "6       | "     | 110.0         | 744         | 100.0      | 826,212        | 101.0      | 2,234       | 25.5       | 2,395,272      | 24.9       |
| 福島第二1    | "     | 110.0         | 0           | 0.0        | 0              | 0.0        | 4,344       | 49.6       | 4,737,277      | 49.2       |
| "2       | "     | 110.0         | 744         | 100.0      | 827,280        | 101.1      | 5,164       | 58.9       | 5,708,447      | 59.2       |
| "3       | "     | 110.0         | 0           | 0.0        | 0              | 0.0        | 5,880       | 67.1       | 6,504,110      | 67.5       |
| "4       | "     | 110.0         | 456         | 61.3       | 504,410        | 61.6       | 3,285       | 37.5       | 3,602,830      | 37.4       |
| 柏崎刈羽1    | "     | 110.0         | 439         | 58.9       | 477,780        | 58.4       | 7,510       | 85.7       | 8,208,580      | 85.2       |
| "2       | "     | 110.0         | 744         | 100.0      | 833,070        | 101.8      | 6,561       | 74.9       | 7,287,910      | 75.6       |
| "3       | "     | 110.0         | 0           | 0.0        | 0              | 0.0        | 6,592       | 75.3       | 7,289,190      | 75.6       |
| "4       | "     | 110.0         | 155         | 20.8       | 143,150        | 17.5       | 3,239       | 37.0       | 3,570,650      | 37.1       |
| "5       | "     | 110.0         | 744         | 100.0      | 834,030        | 101.9      | 8,051       | 91.9       | 8,834,670      | 91.7       |
| "6       | A BWR | 135.6         | 744         | 100.0      | 1,046,422      | 103.7      | 6,419       | 73.3       | 8,938,672      | 75.3       |
| "7       | "     | 135.6         | 0           | 0.0        | 0              | 0.0        | 7,796       | 89.0       | 10,759,710     | 90.6       |
| 浜岡1      | BWR   | 54.0          | 0           | 0.0        | 0              | 0.0        | 0           | 0.0        | 0              | 0.0        |
| "2       | "     | 84.0          | 0           | 0.0        | 0              | 0.0        | 0           | 0.0        | 0              | 0.0        |
| "3       | "     | 110.0         | 0           | 0.0        | 0              | 0.0        | 6,918       | 79.0       | 7,672,356      | 79.6       |
| "4       | "     | 113.7         | 744         | 100.0      | 851,574        | 100.7      | 6,651       | 75.9       | 7,561,981      | 75.9       |
| "5       | A BWR | 138.0         | 744         | 100.0      | 1,050,116      | 102.3      | 1,752       | 100.0      | 2,473,348      | 102.3      |
| 志賀1      | BWR   | 54.0          | 744         | 100.0      | 410,972        | 102.3      | 6,970       | 79.6       | 3,776,898      | 79.8       |
| 美浜1      | PWR   | 34.0          | 537         | 72.2       | 180,692        | 71.4       | 5,814       | 66.4       | 1,946,731      | 65.4       |
| "2       | "     | 50.0          | 677         | 91.0       | 331,098        | 89.0       | 4,886       | 55.8       | 2,428,004      | 55.4       |
| "3       | "     | 82.6          | 0           | 0.0        | 0              | 0.0        | 3,135       | 35.8       | 2,657,846      | 36.7       |
| 高浜1      | "     | 82.6          | 744         | 100.0      | 642,493        | 104.5      | 6,815       | 77.8       | 5,813,509      | 80.3       |
| "2       | "     | 82.6          | 744         | 100.0      | 646,933        | 105.3      | 6,732       | 76.9       | 5,674,667      | 78.4       |
| "3       | "     | 87.0          | 744         | 100.0      | 667,792        | 103.2      | 8,152       | 93.1       | 7,282,374      | 95.6       |
| "4       | "     | 87.0          | 744         | 100.0      | 670,147        | 103.5      | 6,873       | 78.5       | 6,165,534      | 80.9       |
| 大飯1      | "     | 117.5         | 744         | 100.0      | 884,042        | 101.1      | 6,645       | 75.9       | 7,782,570      | 75.6       |
| "2       | "     | 117.5         | 360         | 48.4       | 428,806        | 49.1       | 8,031       | 91.7       | 9,561,954      | 92.9       |
| "3       | "     | 118.0         | 278         | 37.4       | 306,261        | 34.9       | 1,818       | 20.8       | 2,122,167      | 20.5       |
| "4       | "     | 118.0         | 744         | 100.0      | 890,149        | 101.4      | 7,210       | 82.3       | 8,598,638      | 83.2       |
| 島根1      | BWR   | 46.0          | 0           | 0.0        | 0              | 0.0        | 7,801       | 89.1       | 3,654,429      | 90.7       |
| "2       | "     | 82.0          | 612         | 82.3       | 498,834        | 81.8       | 4,520       | 51.6       | 3,678,905      | 51.2       |
| 伊方1      | PWR   | 56.6          | 744         | 100.0      | 427,326        | 101.5      | 5,117       | 58.4       | 2,914,112      | 58.8       |
| "2       | "     | 56.6          | 744         | 100.0      | 425,499        | 101.0      | 6,657       | 76.0       | 3,732,328      | 75.3       |
| "3       | "     | 89.0          | 5           | 0.6        | 616            | 0.1        | 7,637       | 87.2       | 7,066,629      | 90.6       |
| 玄海1      | "     | 55.9          | 0           | 0.0        | 0              | 0.0        | 7,746       | 88.4       | 4,425,886      | 90.4       |
| "2       | "     | 55.9          | 744         | 100.0      | 430,311        | 103.5      | 7,499       | 85.6       | 4,279,406      | 87.4       |
| "3       | "     | 118.0         | 744         | 100.0      | 899,189        | 102.4      | 7,041       | 80.4       | 8,434,384      | 81.6       |
| "4       | "     | 118.0         | 744         | 100.0      | 891,556        | 101.6      | 8,483       | 96.8       | 10,112,282     | 97.8       |
| 川内1      | "     | 89.0          | 744         | 100.0      | 669,877        | 101.2      | 7,092       | 81.0       | 6,303,189      | 80.8       |
| "2       | "     | 89.0          | 744         | 100.0      | 672,939        | 101.6      | 6,888       | 78.6       | 6,131,661      | 78.6       |
| 合計または平均  |       | 4,712.2       | 24,738      | 62.7       | 22,569,593     | 64.4       | 307,309     | 67.2       | 277,856,567    | 68.9       |
| ( )は前月/年 |       | (4,712.2)     | (21,906)    | (61.5)     | (20,378,305)   | (64.4)     | (275,388)   | (60.3)     | (240,013,328)  | (59.7)     |
| 時間稼働率    |       |               |             | 63.9       |                |            |             | 68.4       |                |            |
| ( )は前月/年 |       |               |             | (63.8)     |                |            |             | (59.0)     |                |            |



炉型別平均設備利用率

| 2005年3月 |    |               |            |
|---------|----|---------------|------------|
| 炉型      | 基数 | 認可出力<br>〔万kW〕 | 利用率<br>〔%〕 |
| BWR     | 30 | 2,775.6       | 52.0       |
| PWR     | 23 | 1,936.6       | 82.1       |

電力会社別平均設備利用率

| 2005年3月 |    |               |            |
|---------|----|---------------|------------|
| 会社名     | 基数 | 認可出力<br>〔万kW〕 | 利用率<br>〔%〕 |
| 原電      | 3  | 261.7         | 101.4      |
| 北海道     | 2  | 115.8         | 102.6      |
| 東北      | 3  | 217.4         | 39.3       |
| 東京      | 17 | 1,730.8       | 48.1       |
| 中部      | 5  | 499.7         | 51.2       |
| 北陸      | 1  | 54.0          | 102.3      |
| 関西      | 11 | 976.8         | 77.7       |
| 中国      | 2  | 128.0         | 52.4       |
| 四国      | 3  | 202.2         | 56.7       |
| 九州      | 6  | 525.8         | 91.1       |

・備考

女川1...原子炉格納容器への窒素補給量の増加に伴う

原子炉手動停止(2/25-)

女川2...第7回定検中(1/22-)

福島第一1...第23回定検中(02/11/20-)

福島第一3...第20回定検(04/8/9-05/3/25)

福島第一4...給水加熱器室からの漏えいに伴う中間停止(04/12/9-)

福島第一5...第20回定検中(04/11/10-)

福島第二1...第17回定検中(04/9/29-)

福島第二3...第13回定検中(04/12/2-)

福島第二4...第13回定検中(3/20-)

柏崎刈羽1...タービン建屋内における蒸気の微少漏えいに伴う

故障停止(2/4-3/13)

柏崎刈羽3...第8回定検中(1/18-)

柏崎刈羽4...第8回定検(04/8/7-05/3/25)

柏崎刈羽7...第6回定検中(3/1-)

浜岡1...第19回定検中(02/4/26-)

浜岡2...第20回定検中(04/2/21-)

浜岡3...第13回定検中(1/14-)

浜岡5...営業運転開始(1/18)

美浜1...湿水分離加熱器加熱蒸気室ドレン抜き栓からの漏えいによる点検のため発電停止(2/4-3/9)

美浜2...第22回定検(1/9-3/3)

美浜3...第21回定検中(04/8/14-)

大飯2...第19回定検中(3/16-)

大飯3...原子炉格納容器内での漏えいのため発電停止(3/8-3/27)

島根1...第25回定検中(2/20-)

島根2...原子炉再循環ポンプ点検に伴う点検停止(3/26-3/31)

伊方3...第8回定検(2/13-3/31)

玄海1...第23回定検中(2/17-)

$$\text{設備利用率} = \frac{\text{発電電力量}}{\text{認可出力} \times \text{暦時間数}} \times 100(\%)$$

$$\text{時間稼働率①} = \frac{\text{発電時間数}}{\text{暦時間数}} \times 100(\%)$$

$$\text{時間稼働率②} = \frac{(\text{認可出力} \times \text{稼働時間}) \text{の合計}}{(\text{認可出力} \times \text{暦時間}) \text{の合計}} \times 100(\%)$$