



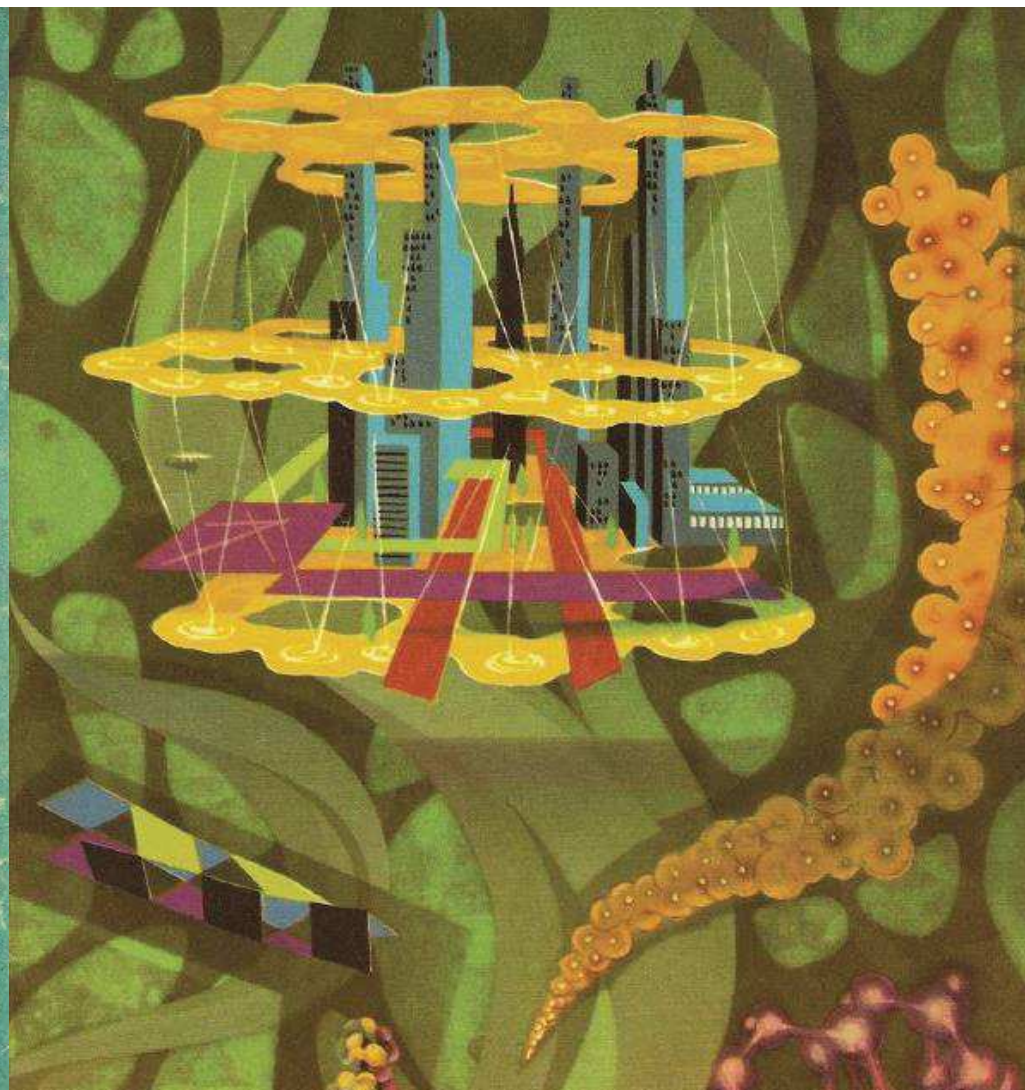
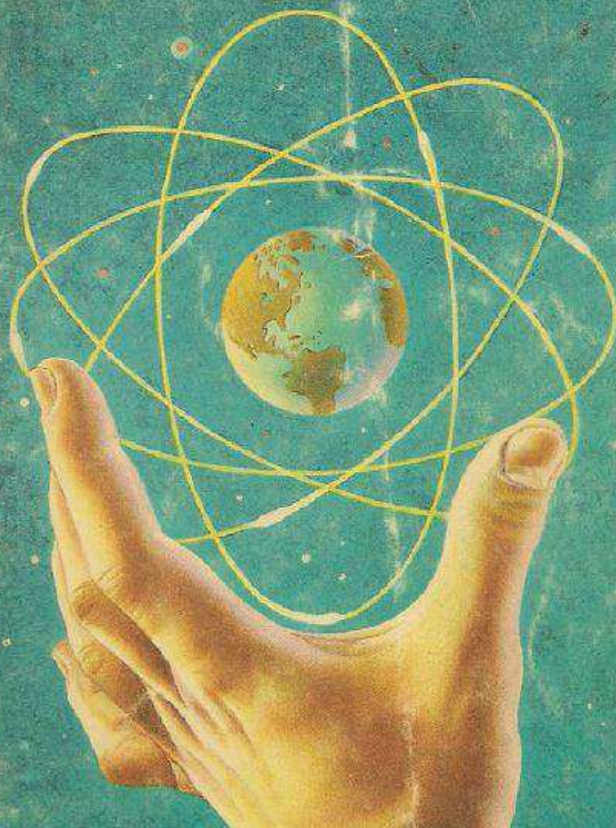




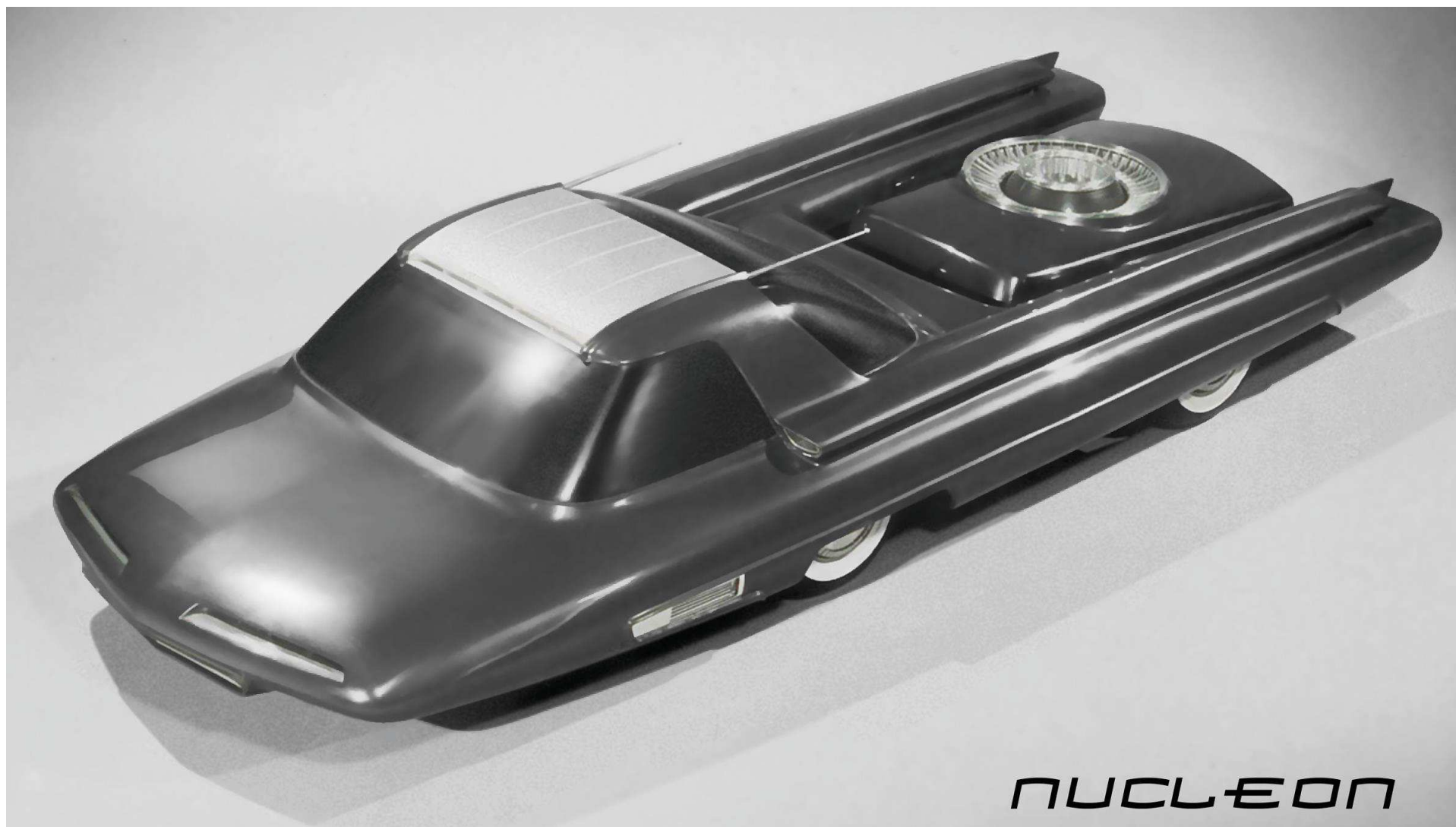


Walt Disney
OUR FRIEND THE ATOM

A Tomorrowland Adventure

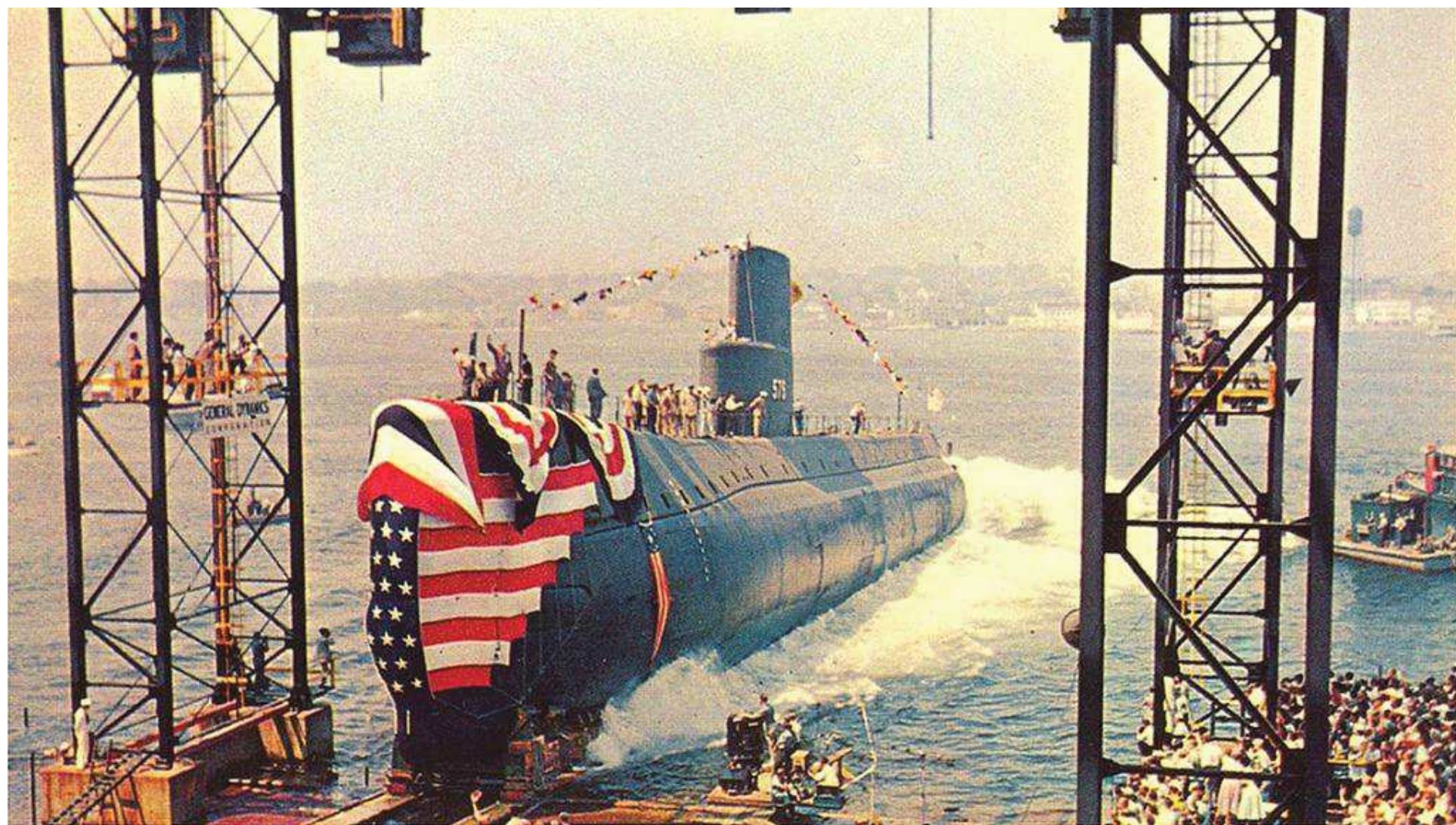


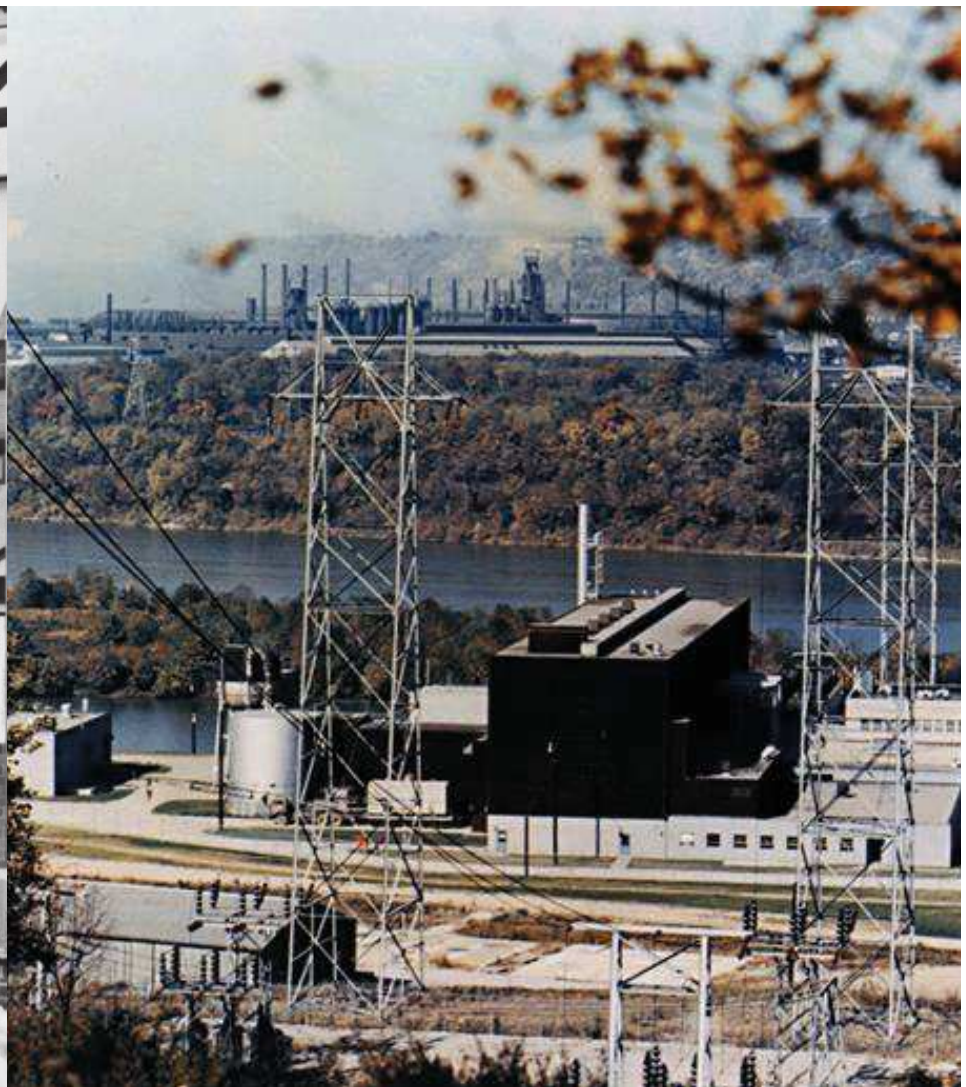
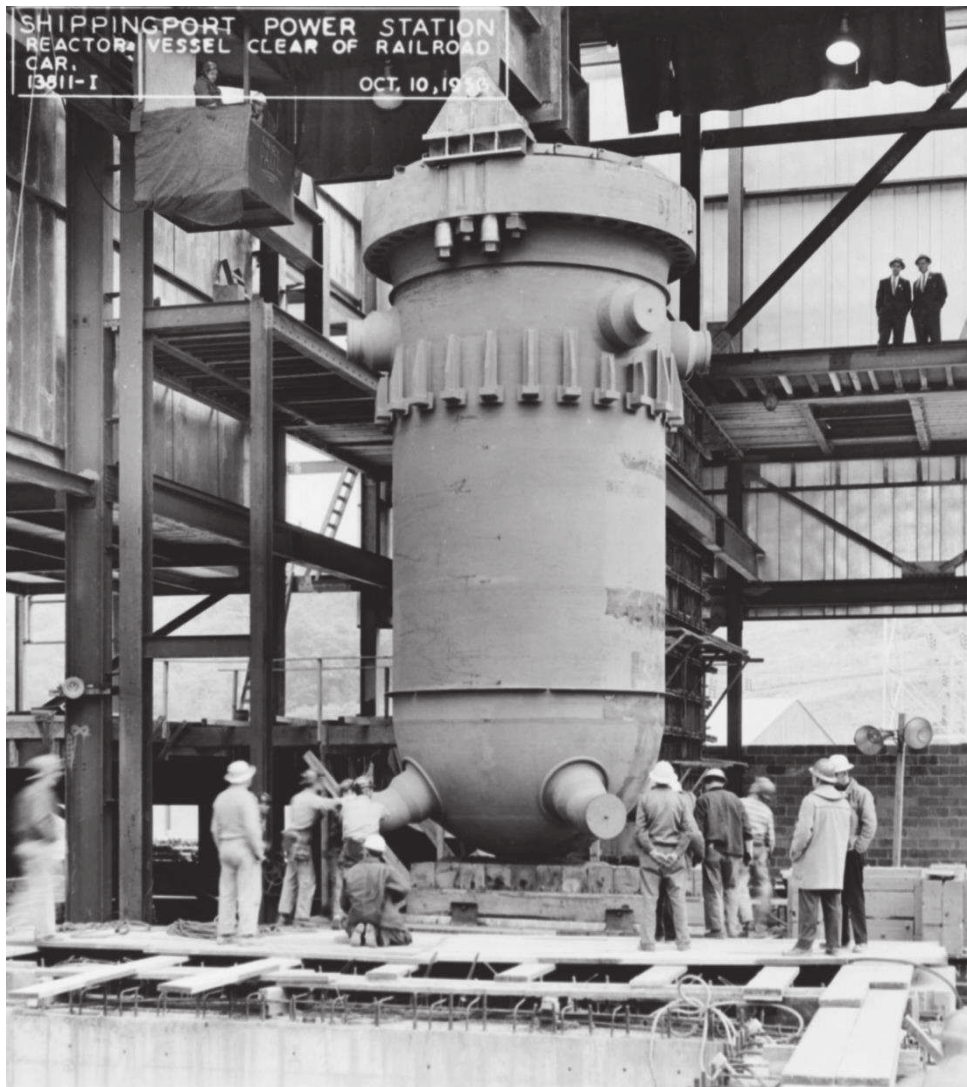




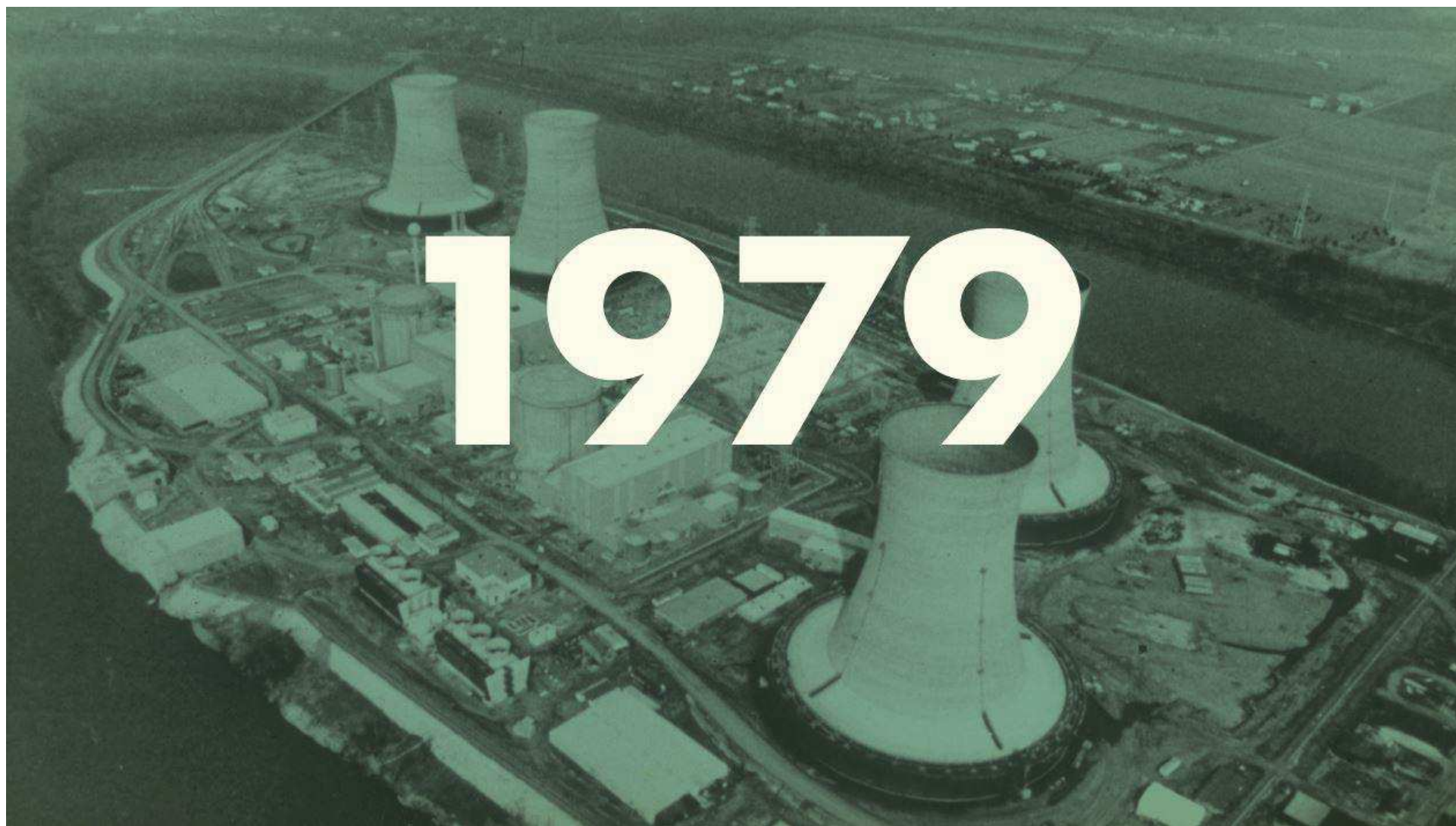
NUCLEON







1979



What's the best way to solve
the underlying problems?

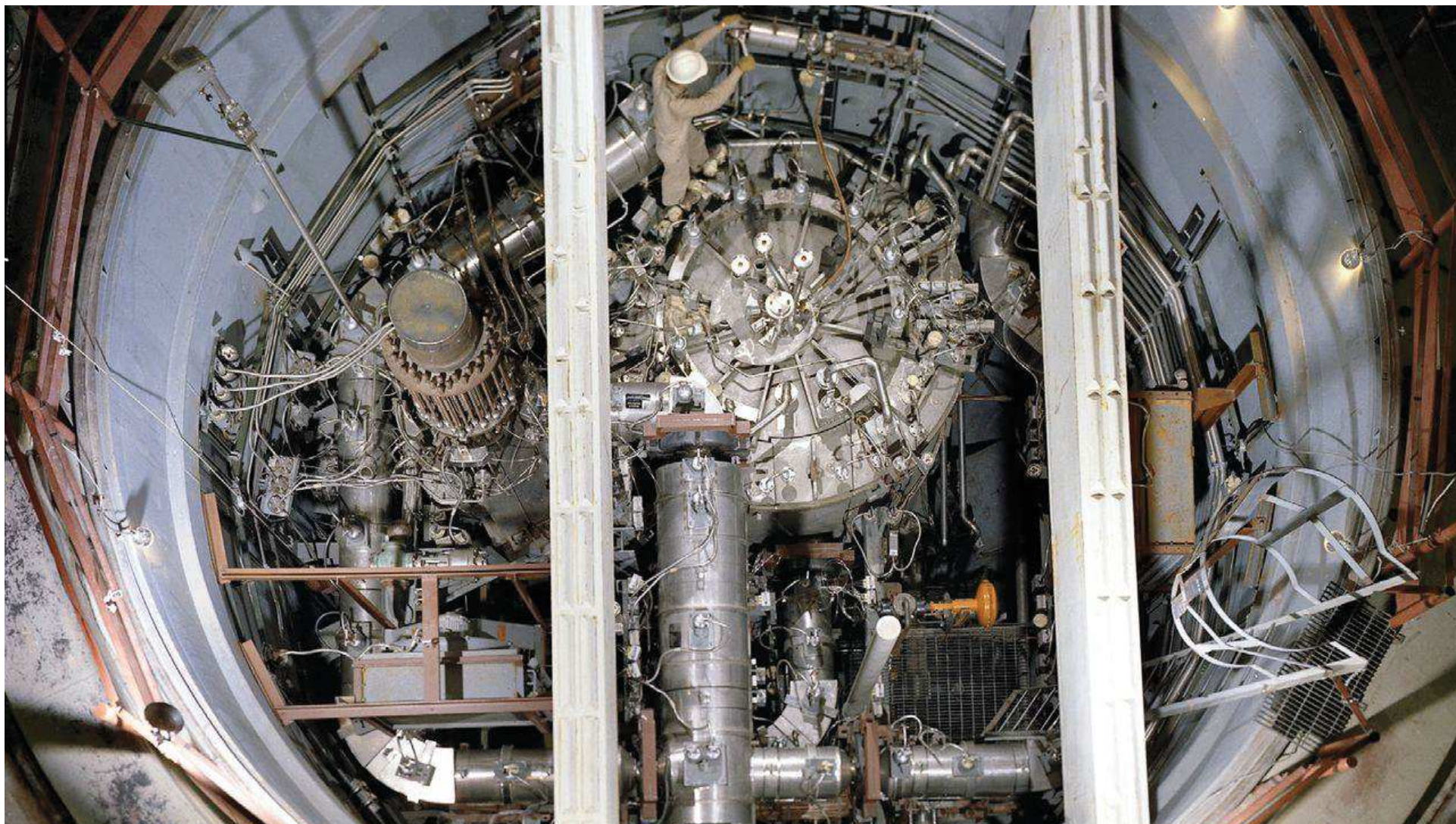


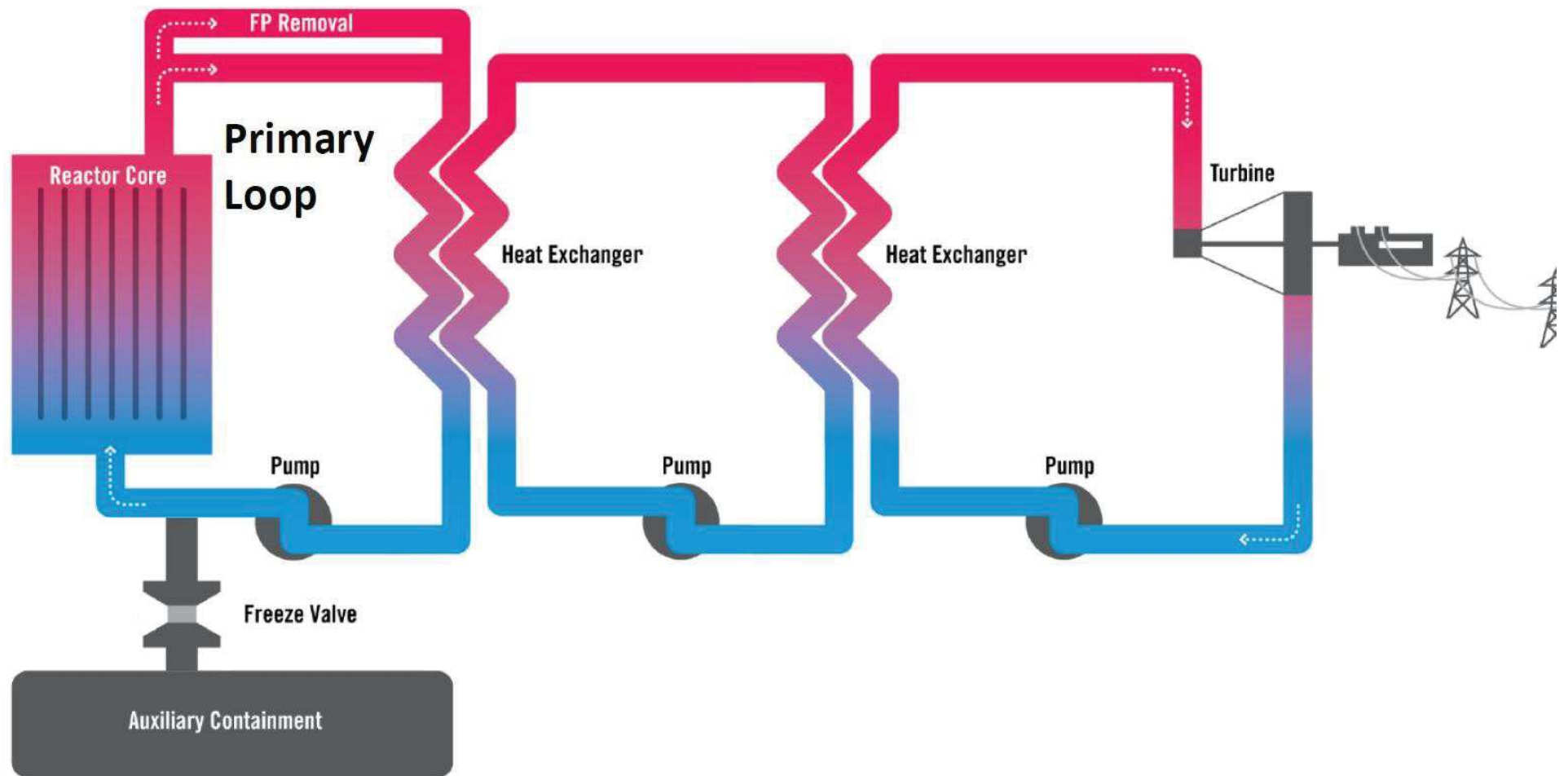
	SCWR Supercritical	VHTR Pebble-gas	MSR Molten salt	SFR Sodium fast	LFR Lead fast	GFR Gas fast
High Burnup						
Low Pressure						
Thermal Spectrum						



MSRE Demonstration at
Oak Ridge National Lab (1965-1969)

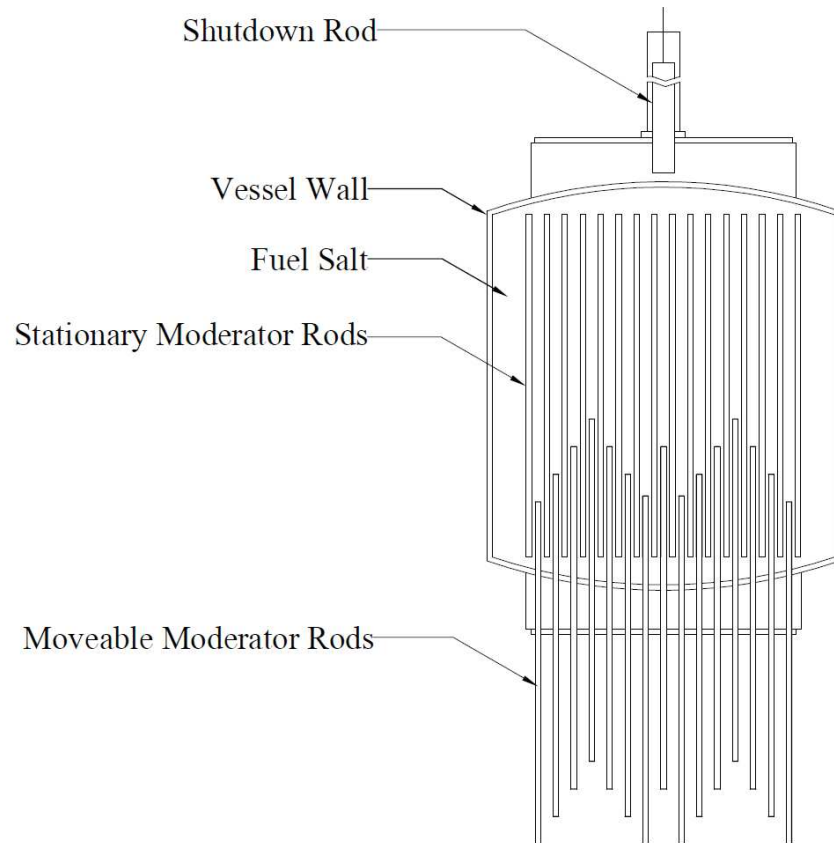






	MSRE	TAP
MODERATOR	▶ GRAPHITE	▶ ZIRCONIUM HYDRIDE
SALT	▶ $\text{LiF-BeF}_2\text{-UF}_4$	▶ LiF-UF_4
FUEL ENRICHMENT	▶ 33%-93%	▶ 5% LEU
POWER DENSITY (MWth/m ³)	▶ 4	▶ >65

How are we different?



- Moderator: The design uses SiC clad ZrH rods
- Fuel: The design employs 5% enriched LEU comprised within a LiF-UF₄ fuel salt.
- Spectrum: In order to increase fuel efficiency the design uses variable moderation to shift the spectrum over the course

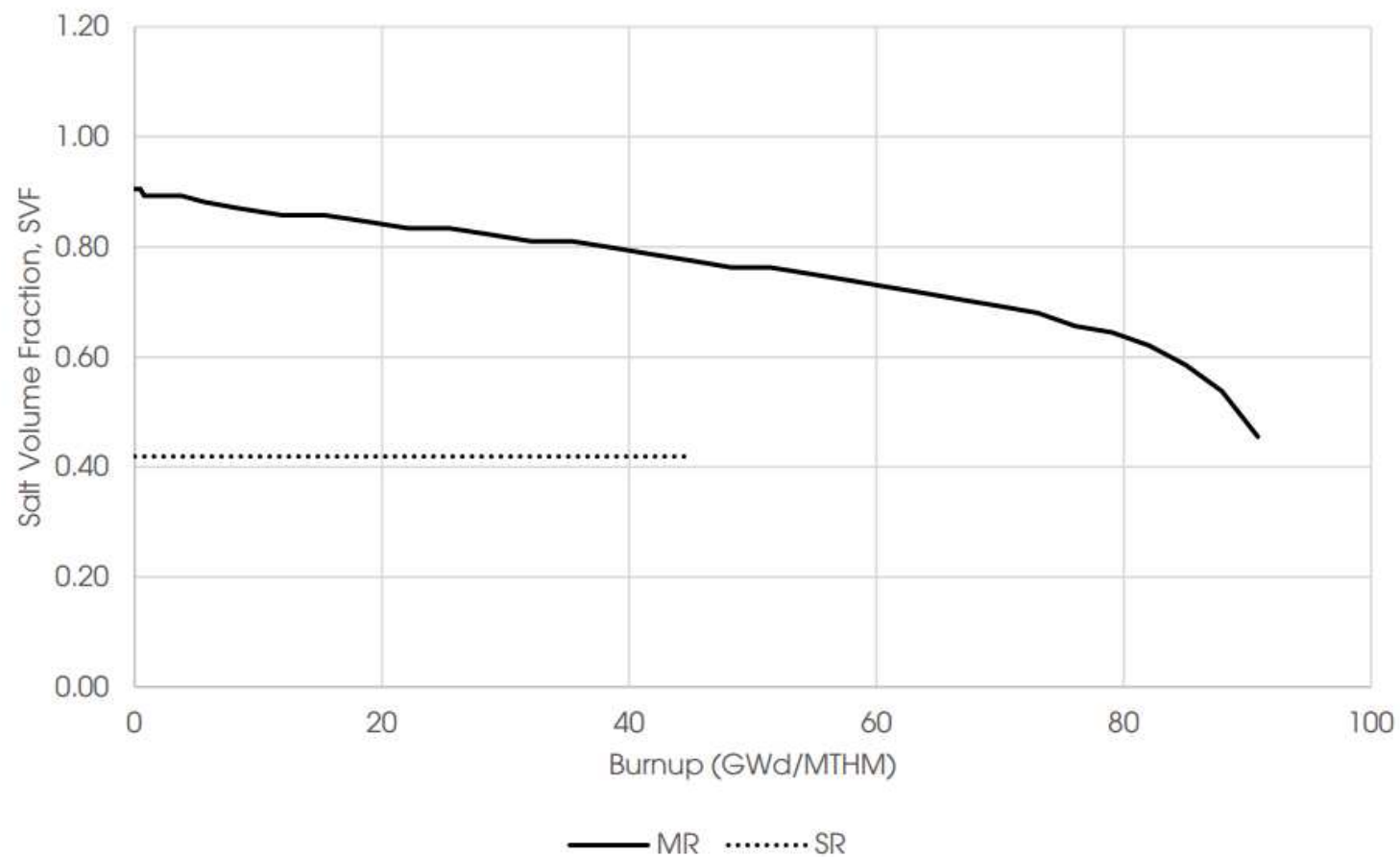
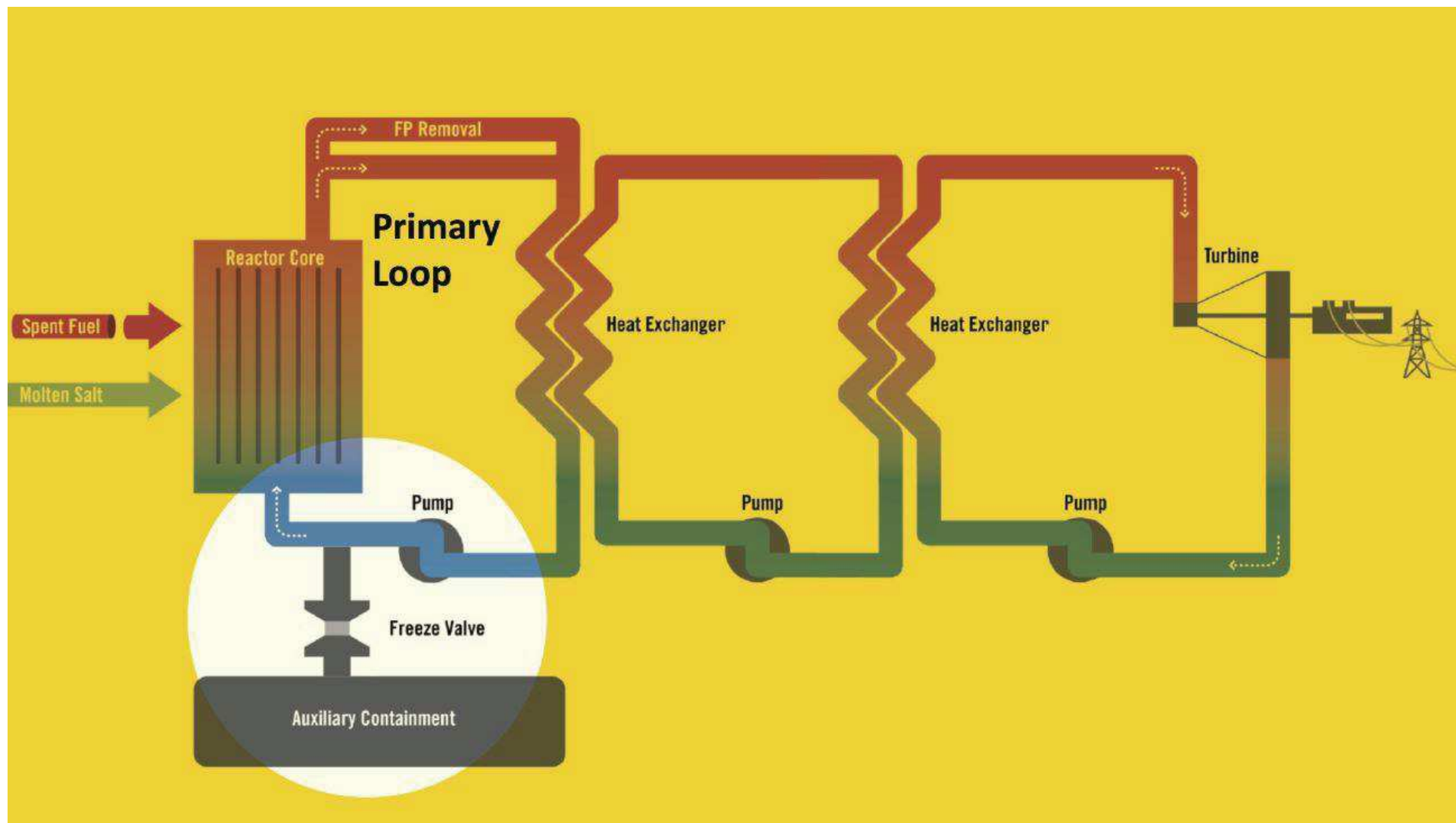


Figure 6. The change in SVF as a function of burnup in the TAP reactor for a 5% enriched initial fuel load. The legend refers to the two possible operational mechanisms: Stationary Rods (SR) and Moveable Rods (MR). Additional calculation details are given in Appendix A.



So, what do we do
next with this?



Delaware

PAGE 1

The First State

I, JEFFREY W. BULLOCK, SECRETARY OF STATE OF THE STATE OF DELAWARE, DO HEREBY CERTIFY THE ATTACHED IS A TRUE AND CORRECT COPY OF THE CERTIFICATE OF INCORPORATION OF "TRANSATOMIC POWER CORPORATION", FILED IN THIS OFFICE ON THE TWENTY-SEVENTH DAY OF APRIL, A.D. 2011, AT 12:23 O'CLOCK P.M.

A FILED COPY OF THIS CERTIFICATE HAS BEEN FORWARDED TO THE NEW CASTLE COUNTY RECORDER OF DEEDS.



Dr. Leslie Dewan
Chief Executive Officer

- PhD MIT Nuclear Engineering
- MIT Presidential Fellow
- TIME 30 Under 30
- WEF Young Global Leader



Mark Massie
Chief Technology Officer

- MS MIT Nuclear Engineering
- DOE Nuclear Engineering University Program Fellow
- DOE Advanced Fuel Cycle Initiative Fellow
- Forbes 30 Under 30



Steve Smith
Chief Operating Officer

- Former US Navy Nuclear Officer
- MS, Old Dominion University
- Oxford University



Wendolyn Holland
Federal Policy Director

- Yale University
- Kellogg MBA
- Previous Director of Strategic Development at Savannah River National Lab



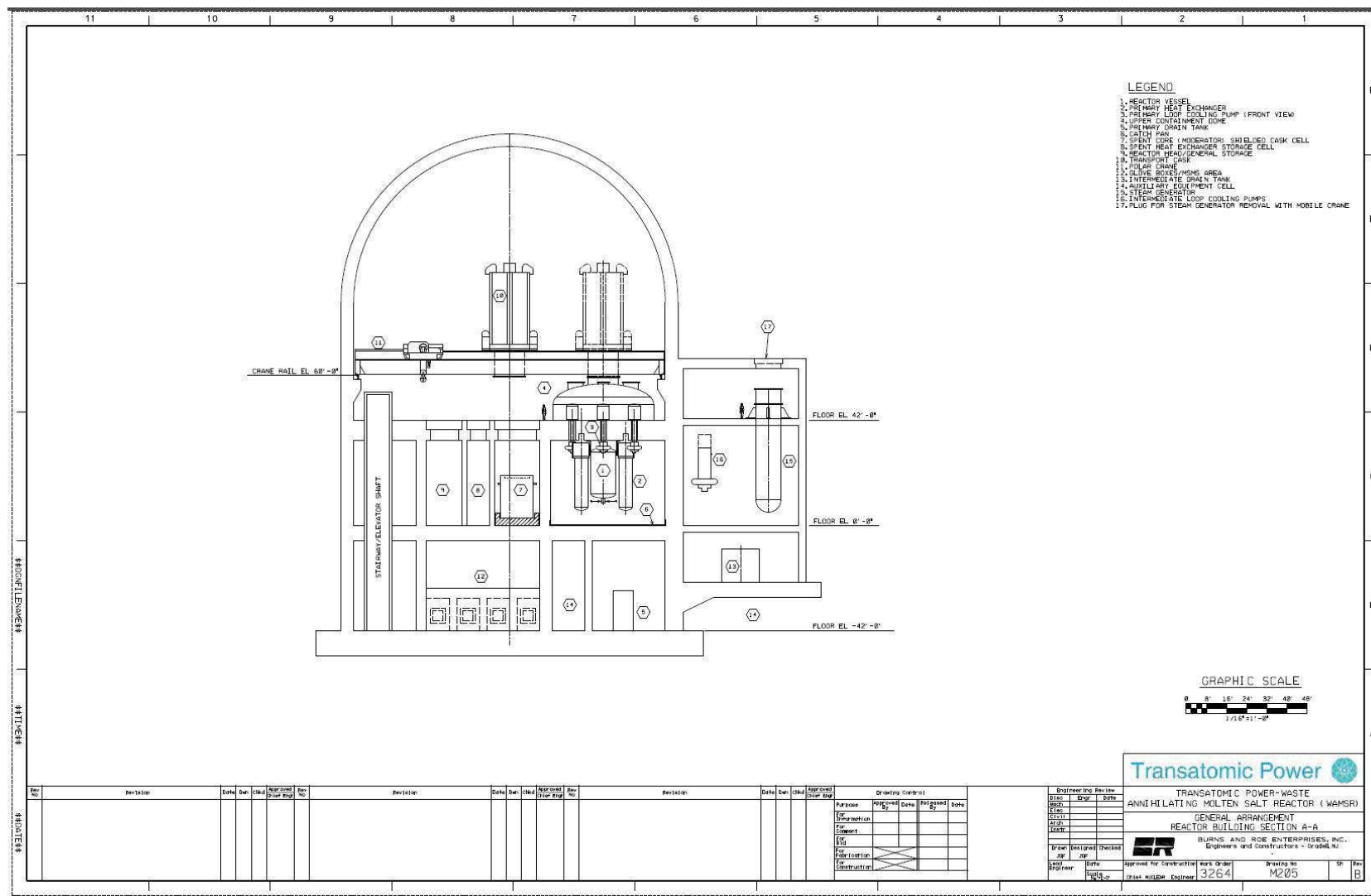
Sean Robertson
Senior Design Engineer

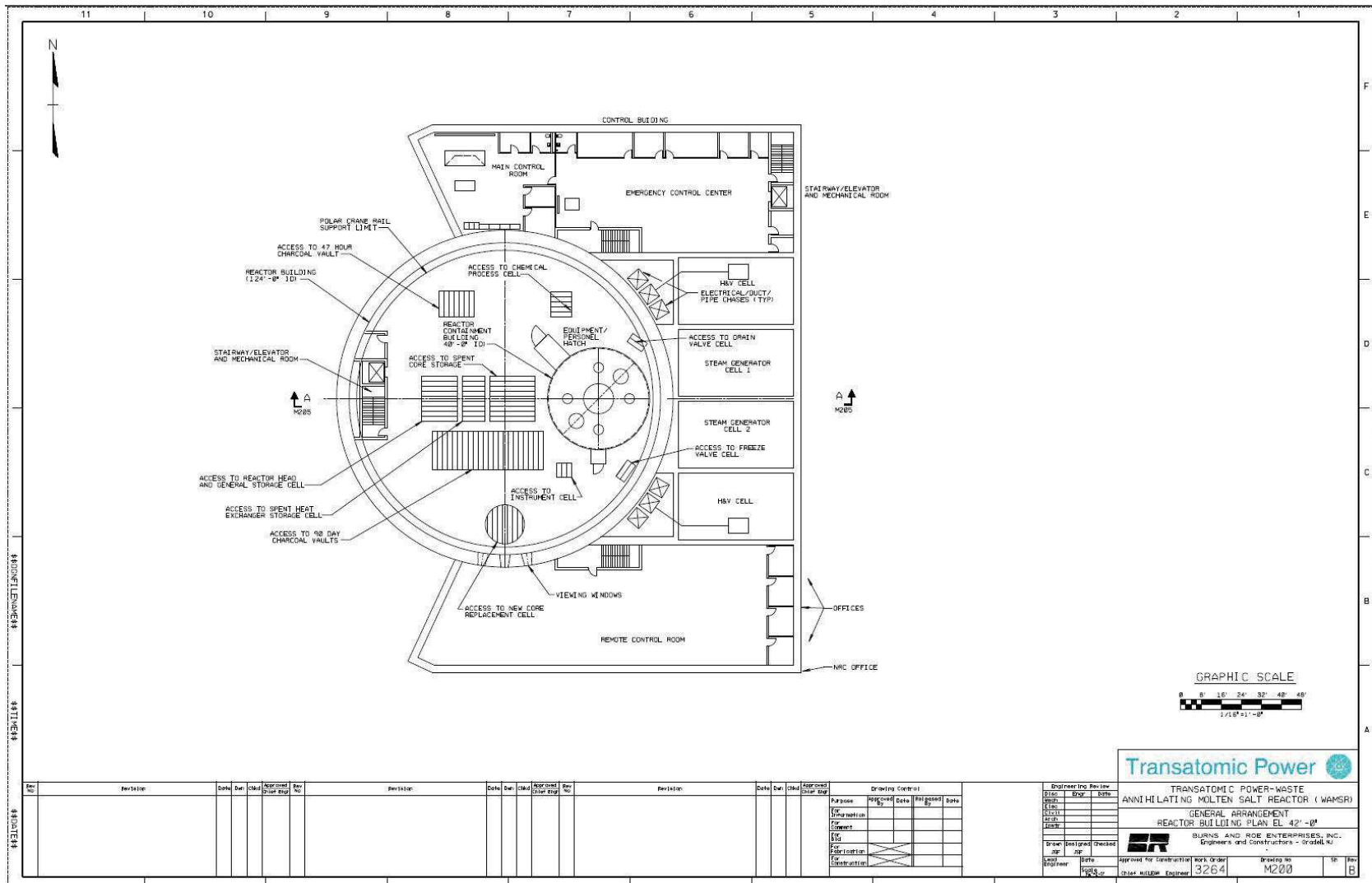
- MS INSTN-CEA, Nuclear Reactor Physics and Engineering

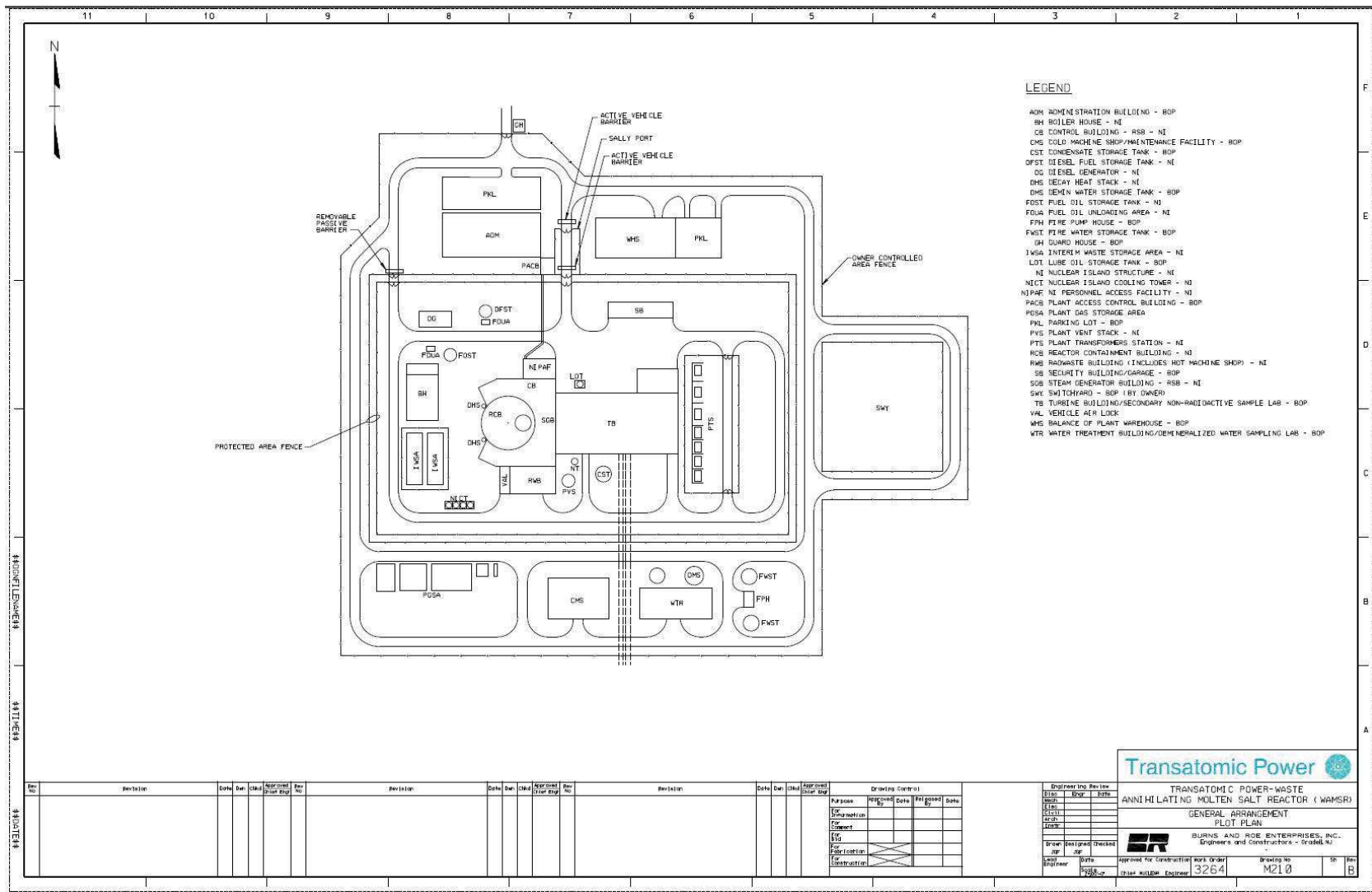


Tim Crook
Nuclear Engineer

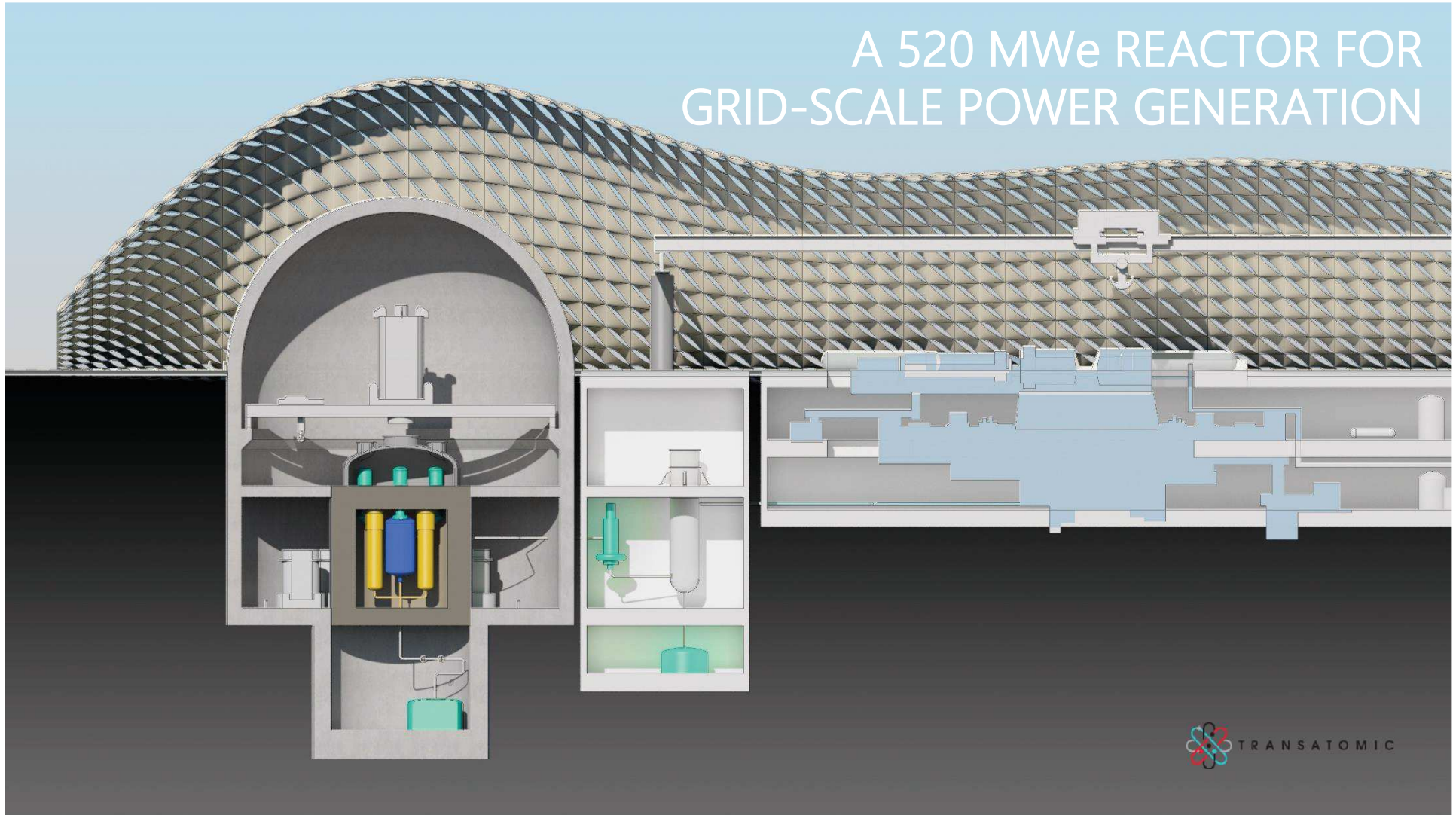
- BS, MS Texas A&M
- ANS YMG and OPD







A 520 MWe REACTOR FOR GRID-SCALE POWER GENERATION





FOUNDERS FUND

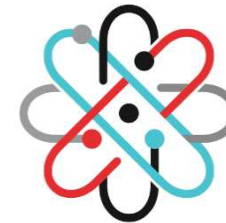


FOUNDERS FUND

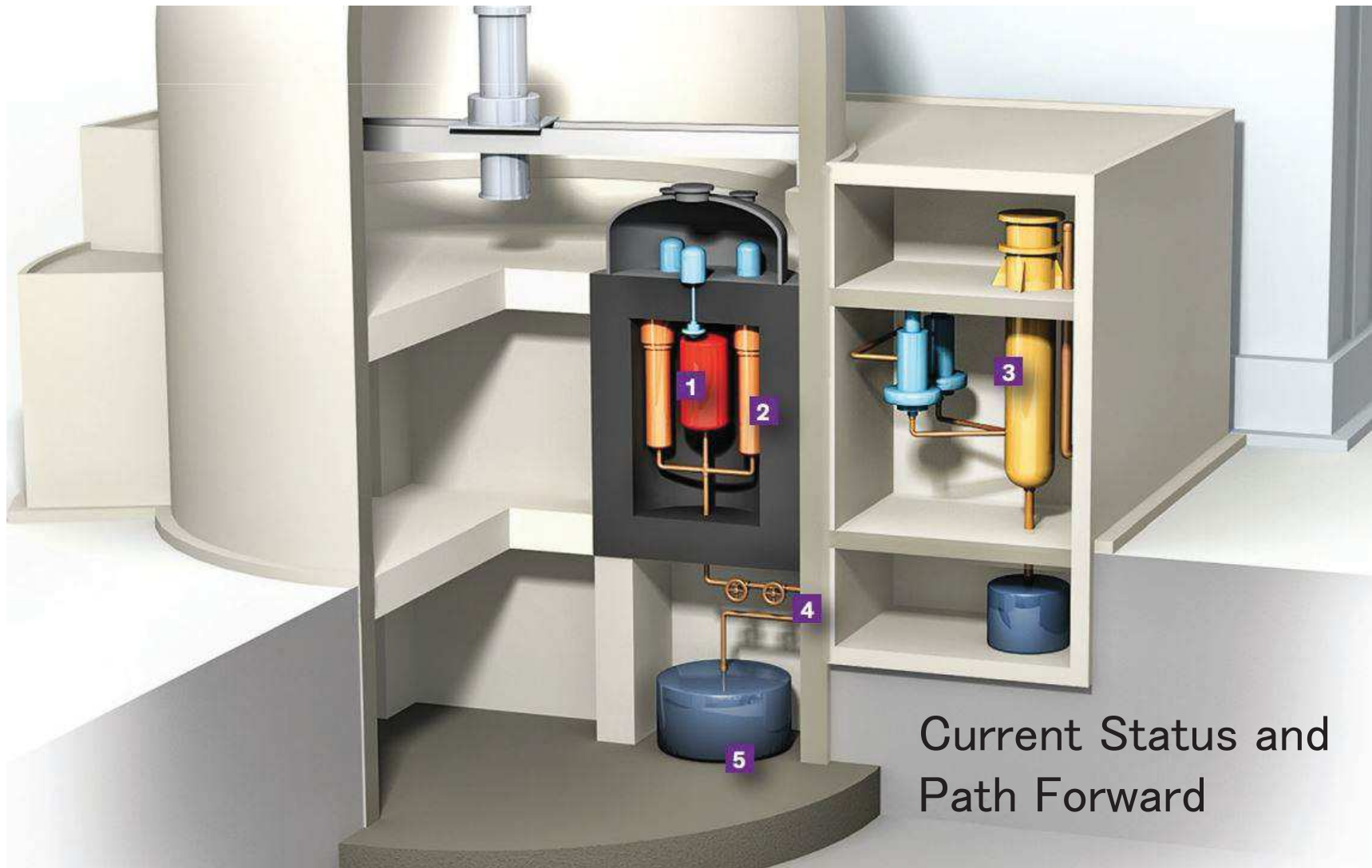




FOUNDERS FUND







Current Status and
Path Forward



COMMITTEE ON
**SCIENCE, SPACE, &
TECHNOLOGY**
Lamar Smith, Chairman





COMMITTEE ON
**SCIENCE, SPACE, &
TECHNOLOGY**
Lamar Smith, Chairman

POLITICS | Thu Mar 23, 2017 | 9:52am EDT

Senate panel passes bill to license advanced nuclear plants





